



APPLETREE CEU
CONTINUING EDUCATION COURSES

Intermittent Catheterization For The Female Patient

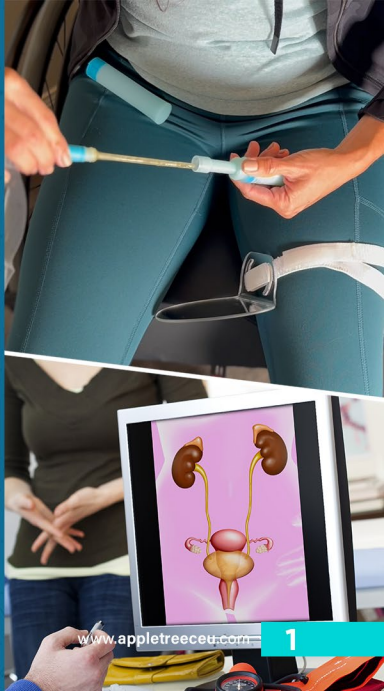
TRANSFORMING INCONTINENCE TO INDEPENDENCE

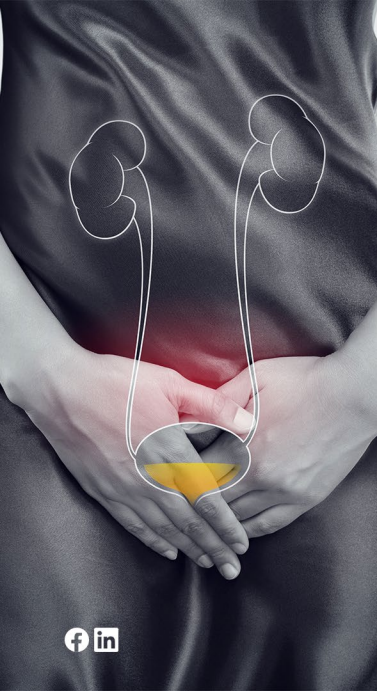


Upon successful completion of this course, attendees will learn all the techniques for maximizing safety and independence with intermittent catheterization for the female patient. The course will start by providing an overview of the anatomy and physiology as it relates to the urinary system. Attendees will learn about all the catheter types and clinical reasoning for each catheter. The course will cover both sterile and clean intermittent catheterization techniques as well as adaptive tools and strategies to increase their client's independence with bladder management.

Objectives

- Compare and contrast open and closed system catheters for female patients.
- List two strategies to identify the urethra for accurate insertion of a catheter.
- Summarize the steps for both clean and sterile intermittent catheterization for the female patient.
- Identify two modifications or assistive technology to assist female patients with learning to complete self intermittent catheterization.





CEU / Credit Information

Occupational Therapists & Occupational Therapy Assistants:

AppleTree CEU is an AOTA approved provider of professional development. Course approval ID# 04419. This live in-person course is offered at 0.10 CEUs (Beginner level, Category of Domain of OT and Occupational Therapy Process). The assignment of AOTA CEUs does not imply endorsement of specific course content, products, or clinical procedures by AOTA.



Requests - If you require ADA accommodations, please contact AppleTree CEU at least two weeks prior to the course so accommodations can be made.

Registered Nurses & Licensed Vocational Nurses: AppleTree CEU is approved as a provider of continuing nursing education by the Kansas State Board of Nursing. This course offering is approved for 1.0 contact hour applicable for APRN, RN, or LPN relicensure. Kansas State Board of Nursing provider number LT0339-0924.

Disclosures – AppleTree CEU has no relevant financial relationships to disclose.

Course schedule

- 11:00 am. Registration
- 1:00-2:00. Intermittent catheterization
 - Causes of urinary retention
 - Anatomy and physiology of urinary system
 - Interdisciplinary approach
 - Therapy role
- Catheter types
 - Straight tip catheters
 - Closed system catheters
- Self intermittent catheterization
 - Sterile and clean technique
 - Assistive technology/adaptive tools

Course Completion Requirements –

To receive contact hours, you must attend the entire education, complete a post-test with a score of 80% or higher and completion of evaluation form.





JEFFREY DESPOMMIER

OTR, ATP, OMS, WCC, CUA

Founder / Principal Instructor

Graduated from the Louisiana State University Health Sciences Center - Shreveport in 2008 with a master's degree in occupational therapy. During his career, he has consulted and assisted with bladder programs in the ICU, acute care, LTAC, SNF, inpatient rehab, outpatient and community rehab settings. He serves as a community liaison and volunteer for United Spinal Houston and is a leader in bowel and bladder rehabilitation. Jeffrey is also a certified Ostomy Management Specialist, Wound Care Certified, a Certified Urologic Associate, an Assistive Technology Professional and has been a guest lecturer at spinal tumor conferences, cancer symposiums, universities and hospitals since 2010. He is the author of a published book titled Core Curriculum: Bowel, Bladder & Ostomy Management which is his latest contribution to the profession.

Register now

SINGLE REGISTRANT - \$30.00

CALL FOR GROUP RATES



832-683-5215



admin@appletreeceu.com



appletreeceu

Cancellation –

Requests for cancellation must be received in writing by mail ten (10) days prior to the course in order to receive a refund, minus a \$30.00 administrative charge. If the cancellation is made within ten days or less, refunds will not be granted.

If you register and do not attend, you are still responsible for payment. In cases of inclement weather where the course is conducted as scheduled but you are unable to attend, you may request a credit to a future course (which expires after one year). AppleTree CEU will not reimburse for incurred expenses related to travel or hotel in the event the course is cancelled by the provider.

If for any reason you are not satisfied with the course, please notify the instructor prior to the first morning break and receive a 100% refund.

SCAN AND REGISTER



www.appletreeceu.com



Karen Brady, MSN, APRN-CNP

Nursing Program Coordinator

Karen graduated from Duquesne University with a Bachelor of Nursing Degree. She spent the early part of her career working in a variety of clinical settings including the ICU, PACU and ambulator clinics. Karen began to work in the specialty of Colon and Rectal Surgery almost 25 years ago. Dedication to this patient population led her back to school to continue her education.

After graduating from Ursuline College with her Masters of Science in Nursing, Karen began work as a Nurse Practitioner for a busy Colon and Rectal Surgery service

Register now

SINGLE REGISTRANT - \$30.00

CALL FOR GROUP RATES



832-683-5215



admin@appletreeceu.com



appletreeceu

Cancellation –

Requests for cancellation must be received in writing by mail ten (10) days prior to the course in order to receive a refund, minus a \$30.00 administrative charge. If the cancellation is made within ten days or less, refunds will not be granted.

If you register and do not attend, you are still responsible for payment. In cases of inclement weather where the course is conducted as scheduled but you are unable to attend, you may request a credit to a future course (which expires after one year). AppleTree CEU will not reimburse for incurred expenses related to travel or hotel in the event the course is cancelled by the provider.

If for any reason you are not satisfied with the course, please notify the instructor prior to the first morning break and receive a 100% refund.

SCAN AND REGISTER

