



APPLETREE CEU
CONTINUING EDUCATION COURSES

Managing Neurogenic Bladder

TRANSFORMING INCONTINENCE TO INDEPENDENCE

AOA American
Occupational Therapy
Association
Approved Provider

AppleTree CEU
14053 Memorial Dr #144,
Houston, TX 77079



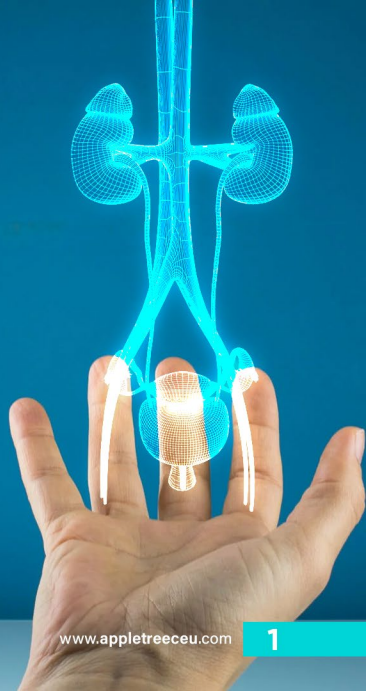
JEFFREY DESPOMMIER
OTR, OMS, CUA, ATP
FOUNDER / PRINCIPAL INSTRUCTOR



Upon successful completion of this course, attendees will learn how to evaluate and treat clients with neurogenic bladder. The course will start by providing an overview of the anatomy and physiology as it relates to micturition control. This will provide a foundation for understanding why and how to treat clients with incontinence using a client-centered approach. Attendees will learn intermittent catheterization techniques for both male and female and strategies to increase their client's independence with bladder management.

Objectives

- Identify the key structures that regulate the process of micturition.
- Recognize the symptoms of overflow incontinence.
- Choose the appropriate treatment intervention for neurogenic bladder.
- Identify the three categories of urinary catheters and the appropriate use of each system.
- Identify the reimbursement guidelines for intermittent catheters.





CEU / Credit Information

Occupational Therapists & Occupational Therapy Assistants:

AppleTree CEU is an AOTA approved provider - Provider #0000000033. This course is approved for 1.0 contact hour or 0.10 AOTA CEUs - Course ID 00382. This course contains beginner level content and is classified under both Domain of OT and Occupational Therapy Process. The assignment of AOTA CEUs does not imply endorsement of specific course content, products, or clinical procedures by AOTA.

Registered Nurses & Licensed Vocational Nurses:

AppleTree CEU, LLC is approved as a provider of nursing continuing professional development by Louisiana State Nurses Association Approver Unit, an accredited approver by the American Nurses Credentialing Center's Commission on Accreditation. LSNA Provider No. 4003249. This activity provides 1.0 contact hour of credit.

Disclosures – Mr. Despommier has no relevant financial relationships to disclose. The nurse planner is a paid speaker for Convatec. All relevant financial relationships have been mitigated.

Course schedule

- 10:30 am. Registration
- 11:00-12:00. Bladder Management Statistics
Impact on daily life
Interdisciplinary approach
Therapy role
- Anatomy and physiology
Micturition control
Male and female bladder
Pelvic floor

- Urinary Incontinence
Causes of incontinence
Overflow incontinence
Neurogenic bladder
- Urinary catheters
Intermittent
Documentation and goals
Reimbursement guidelines
Lab

Course Completion Requirements –

To receive contact hours, you must attend the entire education, complete a post-test with a score of 80% or higher and completion of evaluation form.



JEFFREY DESPOMMIER

OTR, OMS, CUA, ATP
FOUNDER / PRINCIPAL INSTRUCTOR

Graduated from the Louisiana State University Health Sciences Center - Shreveport in 2008 with a master's degree in occupational therapy. During his career, he has consulted and assisted with bladder programs in the ICU, acute care, LTAC, SNF, inpatient rehab, outpatient and community rehab settings. He serves as a community liaison and volunteer for United Spinal Houston and is a leader in bowel and bladder rehabilitation. Jeffrey is also a certified Ostomy Management Specialist, a Certified Urologic Associate, an Assistive Technology Professional and has been a guest lecturer at spinal tumor conferences, cancer symposiums, universities and hospitals since 2010.

Register now

SINGLE REGISTRANT - \$30.00

CALL FOR GROUP RATES



832-683-5215



admin@appletreeceu.com



appletreeceu

Cancellation –

Requests for cancellation must be received in writing by mail ten (10) days prior to the course in order to receive a refund, minus a \$30.00 administrative charge. If the cancellation is made within ten days or less, refunds will not be granted.

If you register and do not attend, you are still responsible for payment. In cases of inclement weather where the course is conducted as scheduled but you are unable to attend, you may request a credit to a future course (which expires after one year). AppleTree CEU will not reimburse for incurred expenses related to travel or hotel in the event the course is cancelled by the provider.

If for any reason you are not satisfied with the course, please notify the instructor prior to the first morning break and receive a 100% refund.

SCAN AND REGISTER

